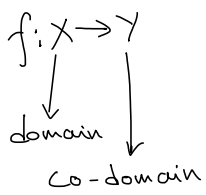
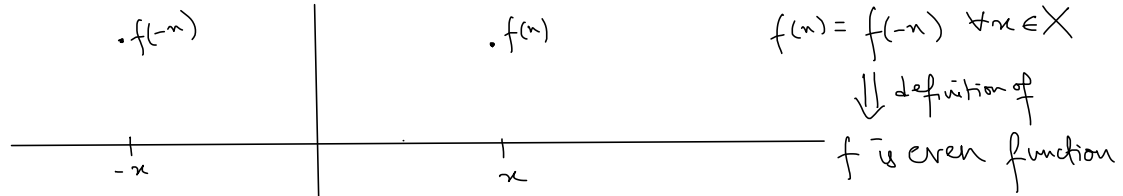


# Random Stuff 5

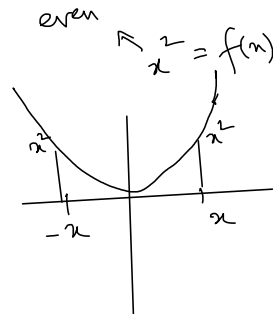
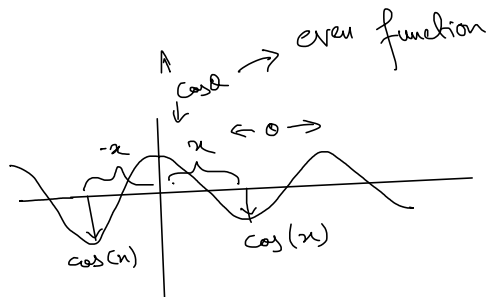
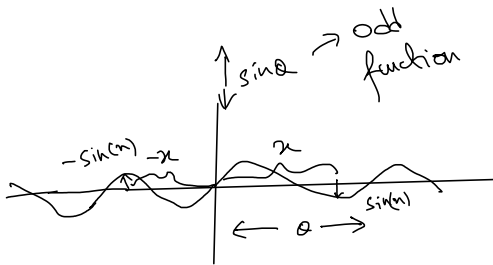
11 November 2024 19:37



$\text{Range} = \{ f(x) : x \in X \}$   
 $\Rightarrow \text{Range} \subseteq \text{Co-domain}$



$f(x) = -f(-x) \forall x \in X$   
 $\Downarrow$  definition of  $f$  is odd function



note: it must be true for all  $x \in \text{domain}$  of the function.